

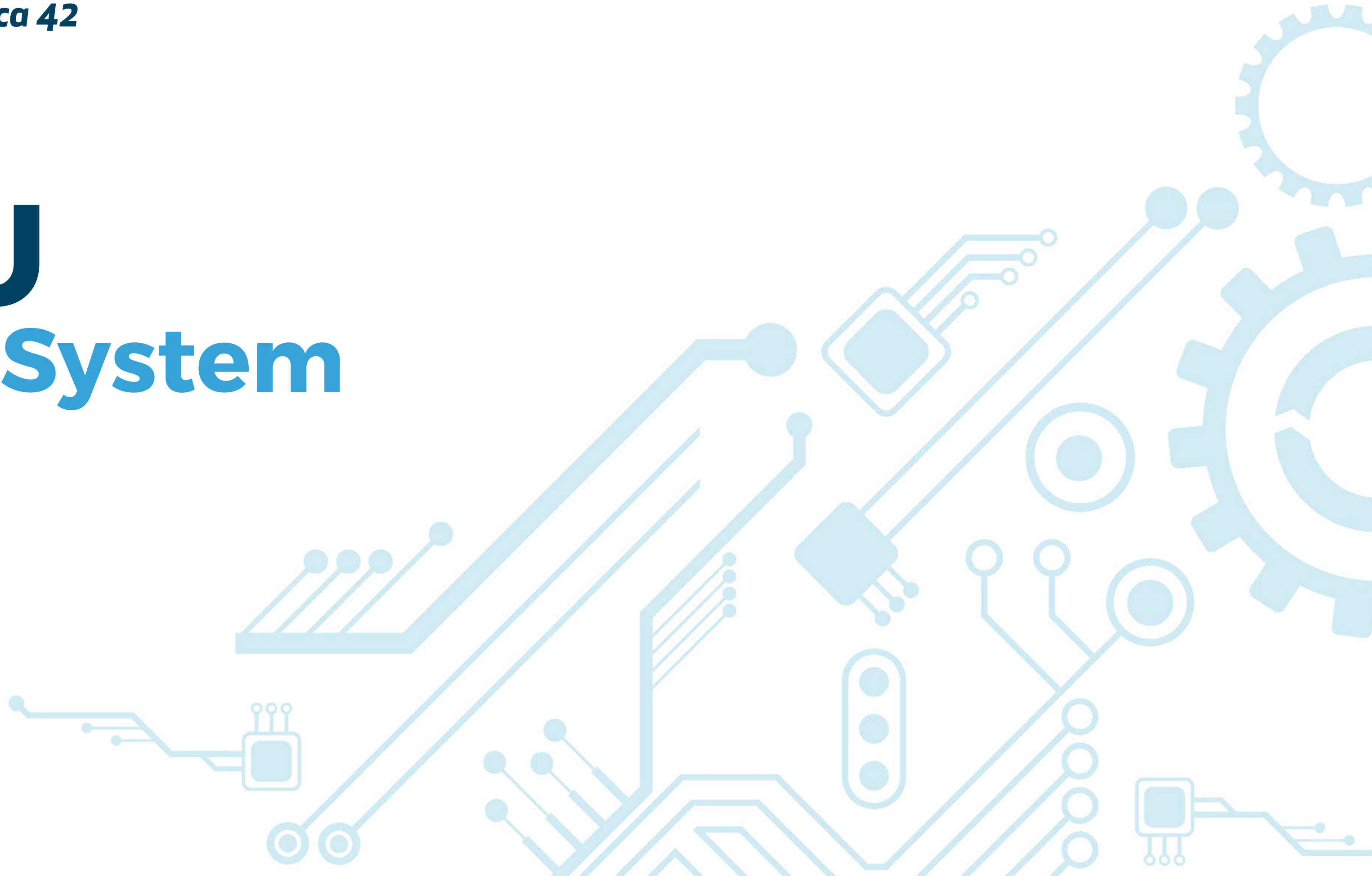


**Meccanica 42**

# **BSU**

## **Body System**

### **Unit**





**Meccanica 42**

# Agenda



Introduction

**03**

What can you do  
with BSU?

**04**

Key performances  
of BSU

**05**





**Meccanica 42**

## **Introducing BSU: your key to any brake-based function and calibration.**

BSU is an open control unit used to easily manage electronic-controlled system.

The user can freely develop its own logic within and integrate it inside the ECU.







**Meccanica 42**

## What can you do with BSU?



Vehicle controls development  
**Body domain system  
management**

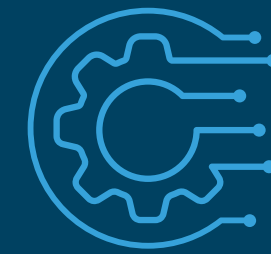


Connectivity  
**3 x CAN**

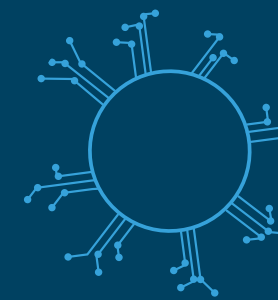


**Meccanica 42**

## Key performances of CBA



Waterproof  
**IP 67**



Easy coding  
**Programming with  
Simulink**



Cycle time  
**1 ms**





**Meccanica 42**

# The future- enabling answer



(+39) 055 628 3216



info@meccanica42.com



www.meccanica42.com



**MECCANICA42**