



**Meccanica 42**

# **WSE** **Wheel Speed** **Emulator**





**Meccanica 42**

# Agenda



Introduction

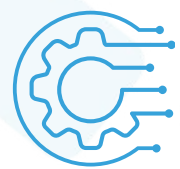
**03**



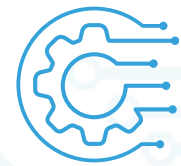
**Meccanica 42**

## Introducing WSE:

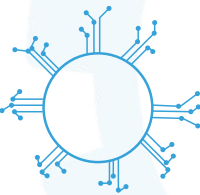
this device established the raw signals of up to four wheel speed sensor into HIL simulations.



Supply Voltage  
**12 V**



Output current levels  
**7-14-28 mA**



Communication rate  
**Up to 100 Mbps (EtherCAT)  
/ 1 Mbps (CAN)**



Communication  
**EtherCAT or CAN**

## What can you customize?

- Tunable wheel Parameters (Radius, pole number)
- User defined data protocol bits
- Switching protocol
- AK protocol







**Meccanica 42**

# The future- enabling answer



(+39) 055 628 3216



[info@meccanica42.com](mailto:info@meccanica42.com)



[www.meccanica42.com](http://www.meccanica42.com)



**MECCANICA42**